



GROUND UP

THE LATEST NEWS FROM
YOUR LEADING CIVILS PARTNER

ISSUE 22 FEBRUARY 2025



PRODUCT SPOTLIGHT

Wavin StormForce sets the standard for sustainable water management



PRODUCT SPOTLIGHT

Naylor launches new modular attenuation system



KEYLINE NEWS

How Keyline's work helped Colne Valley Viaduct become the UK's longest railway bridge



An Orbia business.

FUTURE-PROOFING DRAINAGE: WAVIN STORMFORCE SETS THE STANDARD FOR SUSTAINABLE WATER MANAGEMENT

Wavin are proud to highlight their StormForce service available through Keyline – an all-in-one, end-to-end stormwater management service that is reshaping how the industry handles surface water.

As the UK faces increasing pressure from climate change, urbanisation, and stricter regulatory requirements, managing stormwater effectively has become more critical than ever. Wavin's StormForce provides a complete package, from initial concept and design through to delivery, installation, and even post-installation support. For contractors, developers, and local authorities, this translates into peace of mind, reduced risk, and projects that stay on time and on budget.

WHAT IS WAVIN STORMFORCE?

StormForce is Wavin's turnkey stormwater management solution. Rather than sourcing and managing multiple suppliers, stakeholders can rely on a single, trusted partner. StormForce covers:

- **Concept & Design:** Wavin's expert team works with engineers and contractors from the outset to create an optimised, site-specific drainage designs to ensure your system is efficient and compliant from day one.
- **Product Selection & Supply:** Wavin integrates their market-leading range of products – including AquaCell NG modular tanks, selected to suit your project's specific requirements.

- **Installation Support:** On-site guidance, training, and technical support help ensure correct installation, reducing the risk of costly errors or delays.
- **Assurance & Aftercare:** StormForce includes post-installation inspection and long-term maintenance advice, giving developers and local authorities confidence in system performance for years to come.

This holistic approach not only saves time and money but also significantly *reduces risk* – one of the biggest concerns in modern construction projects.

DESIGNED FOR SPEED AND SIMPLICITY

One of the standout features of StormForce is its ability to streamline the entire project lifecycle. With a single point of contact and clearly defined responsibilities, Wavin removes many of the complexities that can derail drainage schemes.

Key benefits include:

- **Faster approvals:** Detailed technical designs backed by Wavin's expertise often lead to quicker planning and adoption approval from local authorities and water companies.
- **Shorter lead times:** Integrated logistics mean that everything from products to specialist support arrives when and where it's needed.
- **Predictable costs:** By combining design, supply, and support into one package, StormForce helps control budgets and avoid unexpected expenses.

SUPPORTING SUSTAINABILITY GOALS

StormForce isn't just about efficiency – it's also a key part of the sustainability toolkit. The system is designed to support better water quality, reduced runoff, and greater resilience to climate change.

Wavin's smart use of recycled materials, low-carbon manufacturing practices, and long-lasting system design makes StormForce the ideal fit for projects aiming to reduce environmental impact while still meeting tight deadlines and performance goals.

PARTNERING WITH KEYLINE AND WAVIN

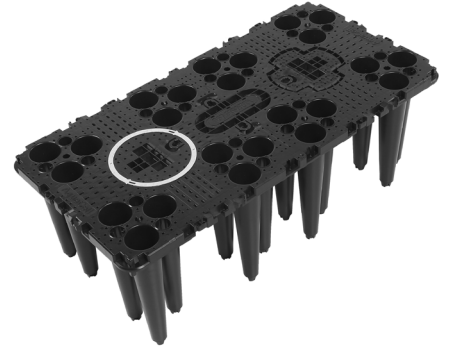
As a leading distributor of drainage and civil engineering products, Keyline is the ideal partner for Wavin to offer StormForce as part of their customer-first service. The teams are on hand to connect you with experts and ensure your next stormwater project gets off to the right start.

If you're planning a new development, navigating SuDS regulations, or simply want to reduce your stormwater risk, StormForce is the future-ready solution you've been looking for.

Visit your local Keyline branch today to learn more about Wavin StormForce and how it can benefit your project.

Branch locator >

Find out more >



GET A QUOTE



WEATHERPROOF YOUR PROJECTS: HEIDELBERG MATERIALS KEEPS BUILDERS WORKING THROUGH WINTER



Heidelberg Materials produces a range of packed products that allow builders and contractors to keep working through the worst of the British weather.

During the wet, cold, winter months, stock up on products such as Quickcem, 40N concrete, Drive Repair Asphalt, Fast Set High Strength PostFix and Multicem.

“We offer a number of different heavy building materials with rapid setting properties,” said Jack Vincent, National Account Manager for Keyline.

“Quickcem and Fast Set High Strength Post Fix, for example, allow projects to

be completed quickly, even in poor weather conditions.”

“We also produce many of our products in weather-resistant or waterproof packaging to ensure they are able to be used on site throughout the year.”

Heidelberg Materials’ core lines can be supplied to Keyline branches as part of a mixed load delivery, helping to minimise vehicle miles and maximise stockholding.

Speak to your local Keyline branch about how Heidelberg Materials products can help you work through winter.

[Branch locator](#) >

[Find out more](#) >

THE PERFECT FIT, EVERY TIME: THE ULTIMATE OFF-SITE SOLUTION BY TRACEY CONCRETE



Tracey Concrete’s Perfect Base™ are transforming the industry with their innovative design and unmatched versatility. By choosing Tracey Concrete via Keyline Civils, you benefit from their unique cast-in collars that are tailored to the exact pipe type used onsite. This bespoke approach eliminates the need for leaky adaptors and the additional costs associated with them, ensuring a perfect fit every time and enhancing the overall integrity and longevity of your infrastructure projects.

Tracey Concrete’s Perfect Base™ are engineered to accommodate any angle, providing unparalleled flexibility for even the most complex installations. With quick lead times, they ensure that your projects stay on schedule

without compromising on quality. These manhole bases are the ultimate off-site solution, designed to streamline the construction process and reduce on-site labour.

By choosing Tracey Concrete, you are opting for a product that not only meets but exceeds industry standards. Tracey Concrete’s commitment to precision and efficiency makes them a preferred choice for contractors and engineers across the UK.

For more information about Tracey Concrete’s products, talk to the team at your local Keyline branch.

[Branch locator](#) >

[Find out more](#) >





Naturally Engineered AquaVoid Home



NAYLOR LAUNCHES NEW MODULAR ATTENUATION SYSTEM



Naylor is to launch an updated version of its AquaVoid modular attenuation crate - 'AquaVoid Home'. The updated AquaVoid Home unit has been developed by Naylor and, to ensure consistent, high quality production standards, will be manufactured at its site in Cawthorne, Yorkshire.

Designed to manage excessive rainfall and prevent surface water flooding, AquaVoid Home stores excess surface water which can be gradually released

back into the surrounding ground via a soakaway or into a drainage system. Available in a standard size of 1000mm x 500mm x 400mm and manufactured from 100% recycled polypropylene, AquaVoid Home is suitable for use in any non-traffic, landscaped areas, particularly those which are prone to flooding.

Engineered for the UK market, AquaVoid Home benefits from an easy-to-install, modular design which clips together making it easy to create tailored

underground rainwater attenuation structures.

The new AquaVoid Home unit will be available from March 2025.

For more information about Naylor's new modular attenuation system, talk to the team at your local Keyline branch.

[Branch locator](#) >

[Find out more](#) >

FP MCCANN LAUNCHES SUSTAINABLE DRAINAGE SOLUTIONS TO COMBAT URBAN FLOODING



FP McCann has introduced a new Sustainable Drainage Systems (SuDS) specification team to manage surface water and address urban flooding effectively. Key benefits include:

Flood Risk Management: Mitigates urban flooding with precast systems.

Environmental Benefits: Enhances water quality by filtering pollutants.

Regulatory Compliance: Meets UK and Ireland planning standards.

Versatile Range: Offers customisable options like permeable paving and tanks.

Cost-Effective: Reduces construction and maintenance expenses.

Aesthetic Integration: Improves landscapes and property value.

Expert Support: Provides technical guidance for best practices.

For more details on FP McCann Precast SuDS solutions, visit your local Keyline branch today.

[Branch locator](#) >

[Find out more](#) >





HOW KEYLINE'S WORK HELPED COLNE VALLEY VIADUCT BECOME THE UK'S LONGEST RAILWAY BRIDGE

Finding the right solution for the HS2 Colne Valley Viaduct's complex drainage detail was no small task...

But, that's where we come in. Working closely with Ibstock - Anderton Concrete, we developed a bespoke pre-cast concrete product that met the project's complex needs - offering

flexibility, cost efficiency, and on-time delivery. From the first approach of Align JV to the installation on site, our team was there every step of the way.

Read more about how our work helped Colne Valley Viaduct become the UK's longest railway bridge [here](#)

SETTING UP AN ONLINE ACCOUNT WITH KEYLINE IS EASY!

Did you know that you can set up an online account to make ordering from us as easy as possible?

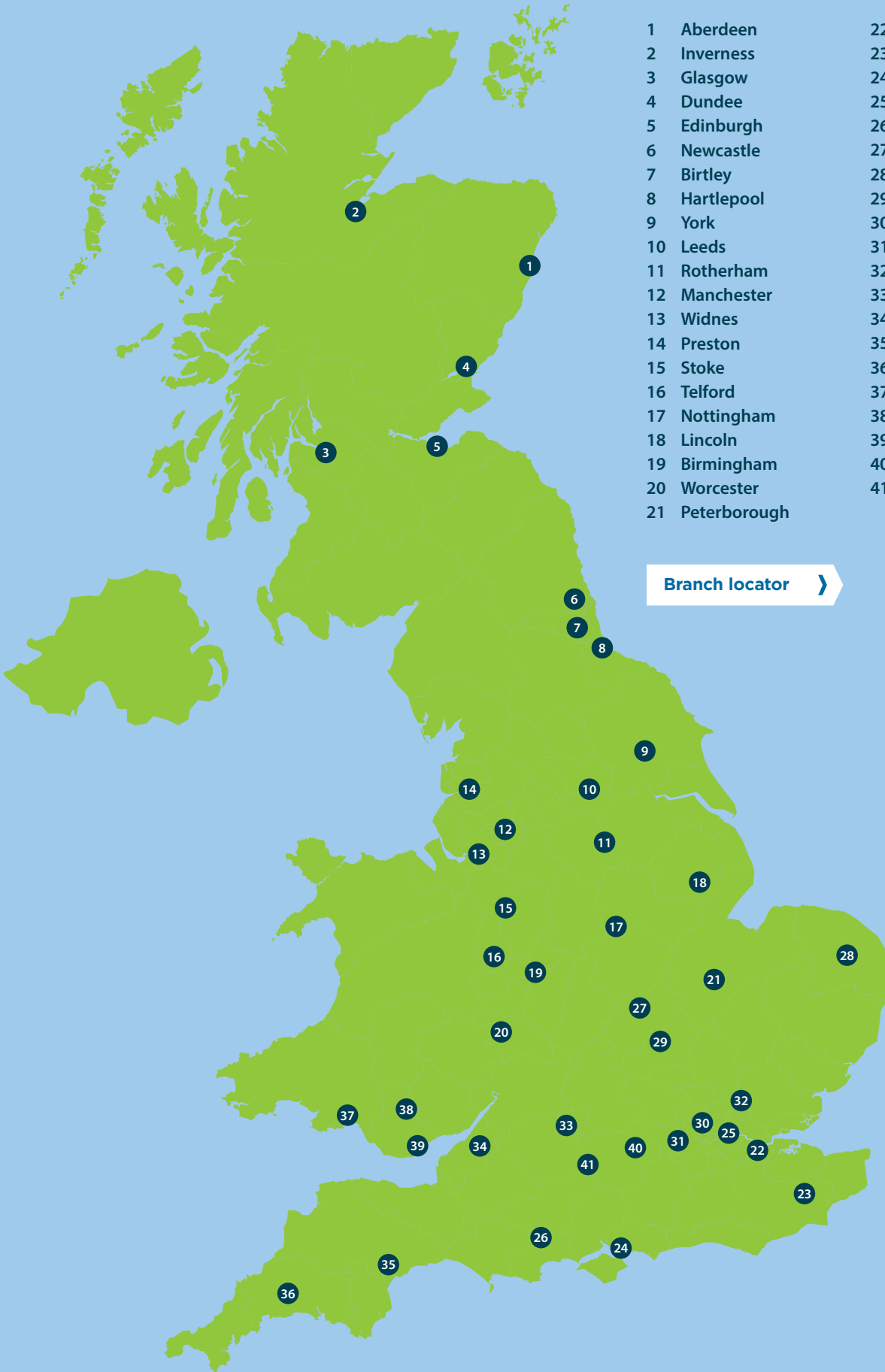
Our online account management system is quick and easy to use, allowing you to track the status of payments and pay multiple invoices at once. Best of all, 24-hour access means you can catch up on the paperwork at a time that suits you!

If you have an account with us, but have not yet accessed it online, [click here](#) to activate your account for online use.

Or, if you do not have an account with us but would like to set one up, [click here](#) to register today!



BRANCH LOCATIONS



- | | | | |
|----|--------------|----|---------------|
| 1 | Aberdeen | 22 | Northfleet |
| 2 | Inverness | 23 | Ashford |
| 3 | Glasgow | 24 | Portsmouth |
| 4 | Dundee | 25 | Canning Town |
| 5 | Edinburgh | 26 | Ferndown |
| 6 | Newcastle | 27 | Northampton |
| 7 | Birtley | 28 | Norwich |
| 8 | Hartlepool | 29 | Milton Keynes |
| 9 | York | 30 | Willesden |
| 10 | Leeds | 31 | Hayes |
| 11 | Rotherham | 32 | Braintree |
| 12 | Manchester | 33 | Swindon |
| 13 | Widnes | 34 | Bristol |
| 14 | Preston | 35 | Exeter |
| 15 | Stoke | 36 | Bodmin |
| 16 | Telford | 37 | Swansea |
| 17 | Nottingham | 38 | Trefores |
| 18 | Lincoln | 39 | Cardiff |
| 19 | Birmingham | 40 | Reading |
| 20 | Worcester | 41 | Basingstoke |
| 21 | Peterborough | | |

Branch locator >