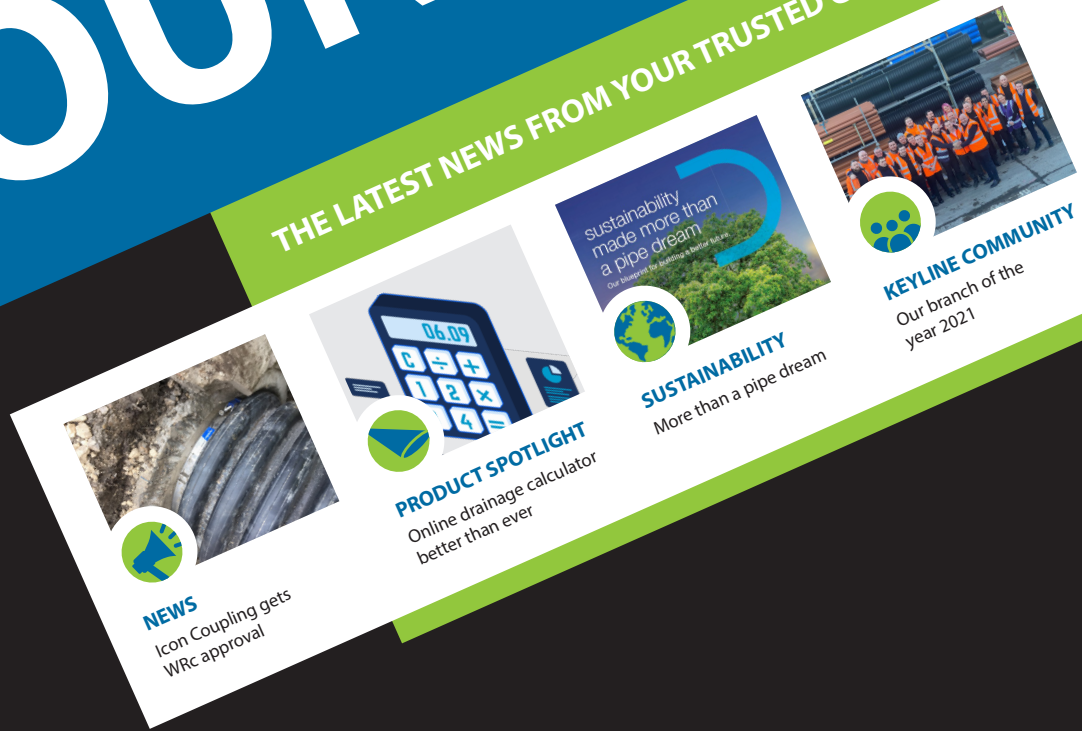


ISSUE 6 MARCH 2022

GROUND UP

THE LATEST NEWS FROM YOUR TRUSTED CIVILS SUPPLIER



NEWS
Icon Coupling gets WRC approval

PRODUCT SPOTLIGHT
Online drainage calculator better than ever

SUSTAINABILITY
More than a pipe dream

KEYLINE COMMUNITY
Our branch of the year 2021

Prostate Cancer is the most common cancer in men.



**PROSTATE
CANCER UK**

Men, we are with you



Check your risk of prostate cancer in 30 seconds

INTRODUCING OUR NEW TECHNICAL DIRECTOR

George Woollard is the new Technical Director at Keyline Civils. George will be building a technical team throughout 2022 to develop innovative product solutions in collaboration with our suppliers.



George has been in the civils sector for over a decade, working as a contractor, merchant and manufacturer. He has also held the unique position of Design and Specification Manager, offering expert consultation to clients, design engineers and contractors.

He is looking forward to bringing his knowledge and passion for new product development, early project interaction and supplier relations to create a new part of the National Sales offering at Keyline.

TANK TALK FROM GRAF

Stormwater attenuation tanks collect and store excess water run-off during large storm events. Water is then released from the storage tank at a controlled rate.

The most effective underground storage is created with stormwater attenuation crates, impermeable geomembrane and geotextiles.

Helpful guidance from Graf on issues to raise with customers new to installing a storm water attenuation tank is available online, including

- Need for site surveys
- Routine maintenance
- Remedial repairs

Click [here](#) to read the article.



Click **HERE** to watch **GRAF TV**

Also worth a watch on Graf UK TV, a quick introduction to the environmental benefits of the Graf EcoBloc Inspect!



ICON COUPLING GETS WRC APPROVAL

Flexseal UK is delighted that their popular Icon Mechanical couplings have received WRC Approval.

This range can save contractors hours - the Icon's internal fittings are ideal where the existing drainage pipe is encased in concrete, preventing the installation of an external coupling.

WRC, third party testing and approvals body, has rigorously tested the range against shear load protection, flow performance, leakage tightness and jetting resistance.



To help specify these products for your project, Flexseal have added the range to their 'Product Selector' at findmy.flexseal.co.uk or as an app via the App Store or Google Play.

You'll find a full range of Flexseal products in your nearest Keyline branch.



FEBRUARY 2022 LIGHTS, CAMERA ACTION!

Boom! Our first ever Keyline in-house virtual conference and Annual Award celebrations!

We set out our strategic direction - encapsulated by our 'Focus, Connect, Grow' approach, that will be guiding us through the year ahead and beyond. We were proud to hear from so many of our colleagues during the conference about the progress we're making as a business and about the brilliant achievements across the organisation. Thank you to everyone who made the event so enjoyable and informative.



"Wow, what an experience to have been part of!"

"A truly nerve-racking experience but one I'm proud to have been involved in"

"Fantastic event. Had me smiling throughout!"

ONLINE DRAINAGE CALCULATOR BETTER THAN EVER

The new Alumasc Water Management Solutions Online Calculator is an innovative digital tool for the four Alumasc brands: Rainwater, Harmer, Wade and Gatic. You can now design complete rain-to-drain solutions across an individual site.

Designed for architects, specifiers and engineers, the Online Calculator exports a handy PDF and Excel calculation document and precise product selection.

Key Features:

- Category 2 and 3 Flat Roof Drainage linked to local rainfall data
- Eaves Drainage gutter sizing and pipe calculator for cast and contemporary gutter types
- Slotdrain Hydraulic surface water drainage calculator

Also includes an interactive rainfall data map, links to NBS specifications, detailed drawings and help pages. Further upgrades and new features are on the horizon.

Launch the Alumasc calculator [here](#).

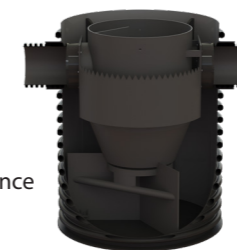


V-SEPTOR TACKLES CONTAMINANTS

The V-Septor is a new advanced hydrodynamic separator from ACO Water Management. By removing sediment-bound contaminants, ACO's V-Septor limits potential damage caused by pollutants in surface water runoff. It reduces sediment build up in downstream attenuation tanks and decreases tank cleaning and maintenance.

Key features of the ACO V-Septor

- Six different sizes
- Integrates easily into existing systems
- Fits directly into a HDPE chamber
- Open central structure for easy maintenance
- Suitable for warehouses, commercial and delivery yards, car parks, and ports



Nick Burchett, Regional Specification Manager at ACO Water Management, comments: "Sustainability is no longer something that construction projects can simply think of as an afterthought - it is central to most specification and installation decisions. Our new V-Septor is a critical component of a SuDS system that seeks to limit negative effects on the surrounding area, all the while continuing to offer optimum hydraulic capacity."

For more information on this highly usable hydrodynamic separator, ask in your local Keyline branch.



PRODUCT SPOTLIGHT

SEPARATOR MAKES FOR SMART SUDS SOLUTION



The Klargester AquaTreat range of water treatment separators help to reduce pollution by removing metals, suspended solids and hydrocarbons from surface water.

Why choose an AquaTreat Separator?

- Large silt storage capacities
- Meets excellent SuDS indices ratings
- Suitable for high polluted lands
- Reduced risk of silt build up
- Lesser risk of downstream pollution
- Tested against full flow
- Easier servicing, with maintenance from ground level
- SmartServ Pro remote monitoring solution (optional extra)
- Mitigation indices available on request

Klargester AquaTreat Surface Water (SWT) separators are not considered oil separators according to the EN 858-1:2002 standard and must not be used in applications where full certification is required.

Contact your local Keyline branch for expert technical support on sizing, installation through to maintenance for all types of SuDS projects or to arrange a free site visit by Kingspan Klargester.



PEACE OF MIND WITH E600 MANHOLE COVER



MORE INFO IN BRANCH

Wrekin Products has extended its robust Unite™ and Highway® ranges with the addition of a new E600 manhole cover, aiming to take the pressure off contractors looking for products that meet exacting Highways England and local authority standards at all stages of installation.

E600 covers meet and exceed all the new regulatory standards set by Highways England, local authorities and BSi. Test loads for their BSi-tested products are 10 per cent higher than required by British Standards.

The Unite E600 has design features that combine longest life and lowest whole life cost. With zero failure to report, it's worth your attention.

For more guidance on the best products for your project, talk to your local technical team at Keyline.



POLYPIPE SEPARATOR REMOVES 99% OIL

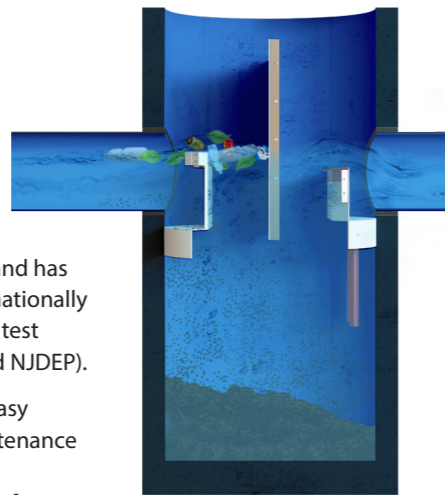
SciCloneX is a new, highly efficient hydrodynamic separation system to treat surface water run-off in urban areas. Thanks to a unique twin cyclone design and extended flow path, SciCloneX provides effective all-in-one treatment for total suspended solids (TSS), oil separation and the capture and retention of gross pollutants.

Helping reduce installation requirements and make transport to site easier, SciCloneX can have a smaller footprint and give equivalent performance to existing products on the market. It can

achieve up to 80% and 99% effectiveness at removing TSS and oil respectively and has been tested to internationally recognised standard test protocols (NJCAT and NJDEP).

The system boasts easy inspection and maintenance as the entire sump is accessible and visible from the surface. It also opens top to bottom for easy removal of remaining pollutants.

SciCloneX is the newest addition to Polypipe's range of treatment solutions which can be seamlessly integrated with Ridgidrain and Ridgistor XL.



CHARITY SUPPORT

PROUD SUPPORTS OF PROSTATE CANCER UK

Keyline are proud to support Prostate Cancer UK's new 'Risk Checker' campaign. Due to the pandemic, 14,000 undiagnosed men haven't started urgent prostate cancer treatment. The earlier prostate cancer is caught the easier it is to cure. Finding these men is crucial to save lives.

Prostate Cancer UK is working in partnership with the NHS to find more than 14,000 men in the UK who need treatment for prostate cancer but have not yet come forward for a diagnosis. With 1 in 8 men effected it's vital all men take 30 seconds to run their simple online risk checker, that's a dad, uncle, brother, partner or best mate who we think are worth saving, so please urge them to visit the site today.



In partnership with **NHS**

1 in 4 black men will get prostate cancer

Early diagnosis saves lives.

Errol McKellar, diagnosed at 52 | Thomas Kagezi, diagnosed at 56 | Gilly Morgan, diagnosed at 48 | Godfrey Fletcher, diagnosed at 47

Check your risk of prostate cancer in 30 seconds

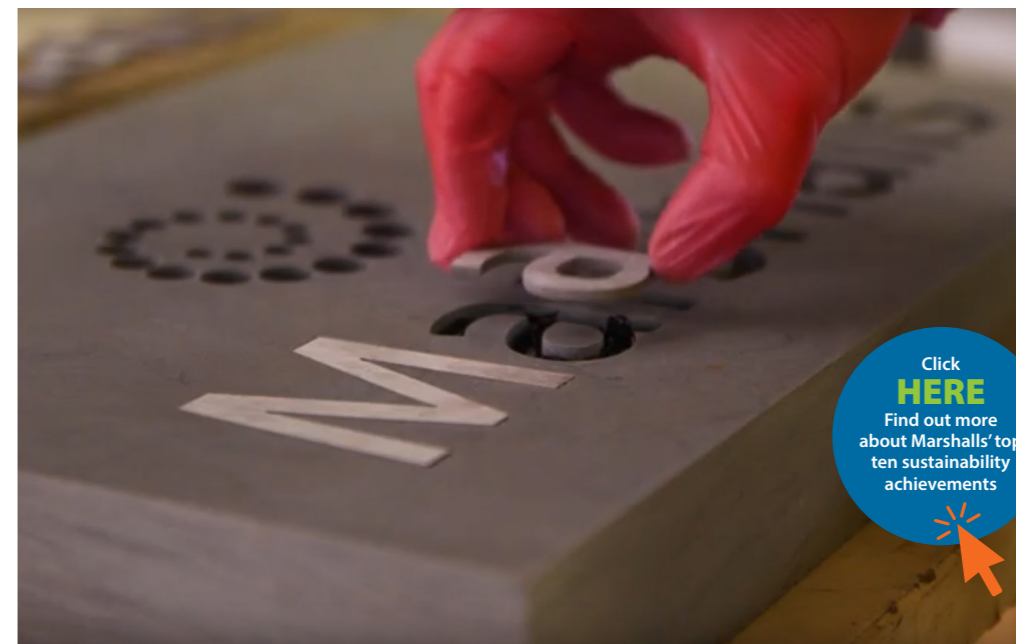
prostatecanceruk.org/risk-checker

PROSTATE CANCER UK

Men, we are with you

SUSTAINABILITY

MARSHALLS CELEBRATES SUSTAINABILITY STEPS



Click **HERE** Find out more about Marshalls' top ten sustainability achievements



Last year Marshalls took positive steps towards net zero, including installing more solar panels, reducing plastic packaging, and receiving recognition as one of Europe's construction industry climate leaders.

Marshalls Group Sustainability Director, Chris Harrop OBE, said: "It hasn't been an easy year, so I'm even more proud that we've been able to continue our sustainability journey. Our achievements really demonstrate our commitment to tackling climate change and upholding human rights."



RECOVER & RECYCLE REACHES MILESTONE

In 2021 Saint-Gobain PAM UK launched the ReCOVER and Recycle with PAM scheme, offering local authorities and contractors the opportunity to reduce their carbon footprint along with those of their clients.

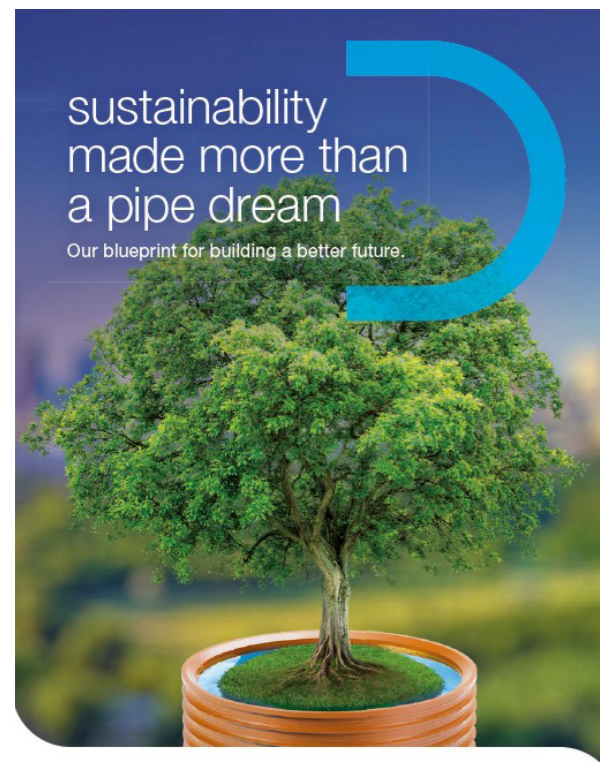
UK-produced scrap metal is delivered to their state-of-the-art recycling centre in Melton Mowbray where it is melted down and recycled into new castings made to the highest quality and sustainability standards.

This process is third party monitored and accredited under an Environmental Product Declaration (EPD) as well as BES 6001 for sustainable sourcing of construction materials. It demonstrates Saint-Gobain's commitment to designing recyclable products and developing industrial solutions for the closed-loop processing of end-of-life materials.

Milestone Infrastructure was the first Highways Tier 1 contractor to sign up for the waste management scheme. They have been working in partnership with Hampshire County Council to create a new purpose-built recycling centre for Hampshire Highways' road materials.



SUSTAINABILITY MORE THAN A PIPE DREAM



Leading plastic pipeline manufacturer Wavin is driving its ambition to be at the forefront of all things sustainability in their sector by 2025, and to be Net Zero by 2050. This aim is being backed by investment, action and leadership.

They're proud to have been awarded the status of 'Construct Zero Industry Business Champion' recently, by the **Construction Leadership Council**. Key sustainability initiatives that won them the award include:

- Reducing carbon in manufacturing processes and distribution
- Using recycled materials to create products
- Reducing plastic content in packaging

To find out more about Wavin's sustainability story, click [here](#).

WAVIN PRODUCTS BETTER FOR ENVIRONMENT

AquaCell geocellular stormwater units made with 100% recycled and recyclable polypropylene

50% of Recycore pipe is made from core of recycled microcellular material

Hepworth Clay pipes created from 100% natural raw material with total end-of-life recyclability



NATIONAL APPRENTICE WEEK 2022

February's National Apprenticeship Week 2022 across the TP Group was a special time to celebrate the progress of our talented colleagues and show appreciation for their committed mentors.

Apprentices are the life blood of the construction industry and by next year we aim to more than quadruple their number.

PROUD TO GROW OUR PEOPLE

A post by Arron Jameson, our newly appointed Regional Manager North & Midlands, shows just how successful our apprentice journeys are.

"It came with great pleasure to announce Jessica Potter as my successor at Keyline Civils Specialist Kirkby in Ashfield in the role of Branch Manager.

The branch and its wonderful team has been left in the hands of a supremely competent, focused and driven young woman.

Jess has at almost all times been enrolled in one of our LEAP apprenticeships during her 3 years within Travis Perkins plc.



All testament to the individual, the content, the delivery and the commitment by the business to develop colleagues into future leaders of business."

BRANCH OF THE YEAR

Keyline Glasgow has been announced as our Branch of the Year!

Huge congratulations to everyone within the branch, and to Branch Manager Chris Thomson. And a special congratulations to John McIsaac, a Yard Manager in our Glasgow branch, for his 30 years at Keyline! Thank you to Gary Turner, our Regional Director, who presented colleagues with their trophy. "What an absolutely outstanding performance and truly worthy winners."



KEYLINE 2022: EXPANSION TO DELIVER THE BEST CIVILS SUPPORT

KEYLINE NATIONALS TEAM

Under the leadership of Dave Rudd, National Sales Director, we now have four specialist National Sales Offices and a National Account Management team led by Lesley Rowland as interim Business Development Director. All are deployed to meet the needs of our major infrastructure customers and stakeholders.

KEYLINE NORTH & SOUTH - WORKING TOGETHER AND BETTER

Towards the end of 2021 and following a review of how we can best support the Keyline UK branch network, we took the business decision to operate with two Regional Directors, one North and one South, overseeing six sub regions - three in the

North and three in the South, each headed up by a Regional Manager and Regional Sales Director.

Including our new Operations Managers, we are delighted that 12 of 14 new positions have been filled internally, with great opportunities for promoted colleagues and local teams to build on existing successful relationships with customers, suppliers and colleagues.

Commercial Director Chris Woollard said, "This will enable us to work together and better as one Keyline. It will allow us to learn and develop faster, and together, enhance our customer offer in the right areas at the right time."

